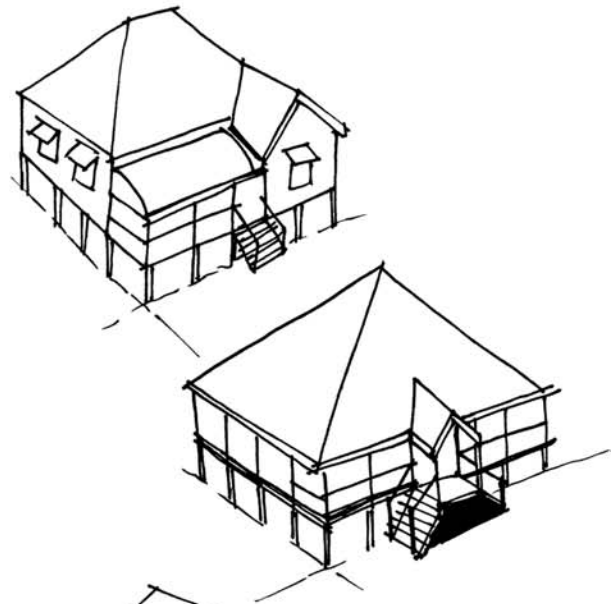


QUEENSLAND BUNGALOW 1920-1935

Form

By the end of this period, the separate curved or bullnose verandah roof had virtually disappeared in favour of unbroken hipped or pyramidal roof forms. Plan forms changed gradually from the central hall or passageway in favour of less formal layouts influenced by the English Domestic Revival styles, and the Californian Bungalow style of which Ipswich has many. Workers' dwellings continued to be simple Queensland verandahed bungalow style. Chimneys gradually less popular after advent of electricity. Roof forms of the Californian Bungalow style featured large boxed and jettied gables, and pitched roof forms. Combinations of hips and gables continued. The influence of the Spanish Mission style belongs to this period and features stuccoed brick walls, arched window and patio openings, and terracotta tiled roofing.



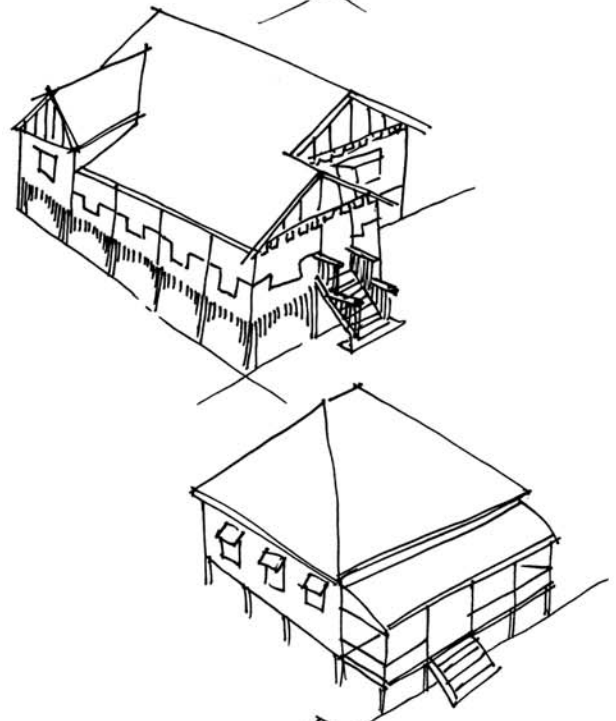
Materials

Generally timber construction, but good examples of stuccoed brick versions of the Californian Bungalow style and Spanish Mission style exist in Ipswich.

Timber houses clad in hardwood weatherboards. Casement windows, often with leadlights were favoured over double hung sashes.

Joinery timber featured silky oak and stained pine in preference to cedar. Both pine and hardwood used for floors. Roofing was still corrugated galvanised iron with quadrant gutters although terra cottatiles and fibrolite shingles were preferred for the more stylistic Spanish Mission and Californian Bungalow houses. Fibrous plaster and fibrolite wall linings often used internally.

Verandahs generally less prevalent and less ornate. Ceilings often featured fibrous plaster moulded panels and cornices, while tongue and groove vee jointed boarding continued to be used in many timber houses.



Ornament/Decoration

Wallpaper decoration over fibrous plaster was used in more expensive houses.

Leadlighting to window sashes and half glass doors.

Tulip shaped cut-outs in timber balustrading and valances.

Decorative fibrous plasterwork to ceilings and cornices.

